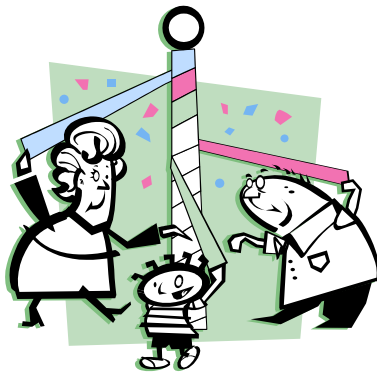


KISLINGBURY NEWS



MAY 2011

Kislingbury Parish Council

PARISH CLERK

Ann Addison Finance 858226

CHAIRMAN

Pauline Cook Finance 831003
Planning
PC Reports in Kislingbury News

VICE CHAIRMAN

Liz Middleton Finance 830047
Planning

COUNCIL MEMBERS

Mark Bates Playing Field Committee 07757434310
Elderly Liaison

Gill Clarke Village School Liaison 830346

Mike Green Street Lighting 832081

Miriam Harris Action Group Representative
Village Hall Committee 831835

George James Elderly Liaison 830075

Les Kingston Highways Representative 832059

Gordon Seal Planning 839081

Ann Addison South Northants Council 858226

Janet Eliot South Northants Council 830231

Joan Kirkbride Northants County Council 01327 340370

Chris Heaton-Harris MP Daventry Constituency 859721

Phil Beeston Footpath Warden 832146

Dennis Tidmarsh Flood & Snow Warden 830074

Leslie Hartwell Deputy Flood Warden 830343

Alex Balbi Tree Warden 07914213262

Lisa Dickson Village Archivist 832092

Felicity Dunkley Village Archivist 830514

Chrissie Key Village Hall Booking Clerk 831824

Tim Ward NHW Coordinator 07855388751

Parish Council Meetings are held on the third Tuesday of each month in Kislingbury Village Hall at 7.30pm. The Press and Members of the Public are welcome to attend. Minutes can be seen on Parish Notice Boards, in the Church Porch and on the Parish Council Website www.kislingburypc.org

Welcome to the May edition of the Kislingbury News

The deadline for the June issue is 17th May 2011. Where possible contributions should be sent in electronic format by email to:

kislingburynews@hotmail.co.uk

or delivered to the compiler, David Lawrence, at 21 Hall Close, Kislingbury.

Sign up to receive Kislingbury News by Email

If you would like to receive a copy of Kislingbury News by email, or know of families who have moved from the village and would like to keep in touch, please send your request by email to kislingburynews@hotmail.co.uk You will still receive your hard copy version delivered to your door each month.

Village Diary

May

- 4th Kisle Amblers meet at Olde Red Lion at 9.45am
- 7-8th Bugbrooke Art Exhibition - Page 16
- 14th Nearly New Sale - Page 6
- 18th Kisle Amblers meet at Olde Red Lion at 9.45am
- 21st Charity Football Match - Page 18
- 24th Art & Craft Society - Page 18

June

- 10th KOFs coach trip - Page 15
- 25-26th Village Fayre - Page 9

Regular Events

Sequence Dance – contact Dave or Rita 01604 830982

Bell Ringing Monday Nights 7.30pm – 8.30pm

Karate - Wednesday & Thursday 6.00pm

Sunday 10.00am

See Eddie Sanders at the Village Hall for more details

Taekwondo - every Friday from 6-7pm at Kislingbury Primary School

Play group open during Term Time at Village Hall

St Luke's Sunday Group for Children 11.00am at Kislingbury School 1st

Sunday of every Month

Kislingbury Art Group - every Thursday afternoon 2.30pm at Village Hall

Line Dancing Classes at Kislingbury Village Hall. Thursday 7.30pm - 8.30pm for beginners and 8.00pm - 9.30pm for improvers. Contact Maureen on 01604 754518 or 07788 737052.

Kislingbury Parish Council

The Annual Parish Meeting was held on Tuesday 19th April 2011. This meeting gives parishioners an opportunity to have their say without the time constraints of a Parish Council meeting. Only one Parishioner attended, which was very disappointing.

CHAIRMAN'S ANNUAL REPORT APRIL 2011

Four years ago, on 17th April 2007, a group of parishioners attended the Annual Parish Meeting and asked the Council to provide some land for allotments. This was easier said than done. Neither the Parish Council nor South Northants Council owned any land and subsequent requests to local landowners proved fruitless. Then, about a year later, English Partnerships, as it then was, entered the mix and the rest is history. After three long years of negotiations, the land transfer documents were signed and Kislingbury Parish Council became the official owners of the Beech Lane Allotments. This land will remain as allotments in perpetuity. There are plots for thirty-one tenants and, at the time of writing, six are left vacant, but five people have expressed an interest. This has been a major achievement for the Parish Council, but in particular for Gordon Seal, who has been the driving force behind the project from the beginning. I would like to take this opportunity to publicly thank Gordon, on behalf of the parish, for a job well done.

The Land Transfer Deal also included a large plot of land, adjacent to the Playing Field, which the Parish Council has leased to the KPFA for a period of fifty years, at a peppercorn rent.

Last year I said in my report that we had received innumerable complaints about the appalling state of The Green. I reiterate now what I said then. The damage to the land bordering the diagonal road across the green is such that we are in danger of losing several feet of this wonderful village amenity. The continuous use of this road as a car park, and the damage caused by traffic driving on to the grass when trying to get past the parked vehicles, has broken down the edges of the road and churned up the green, leaving it deeply rutted. In wet weather, this turns into a mud bath. This is still an ongoing problem which the Parish Council must address, as a matter of urgency, before next winter. As a council, we must make a difficult, and possibly contentious, decision on what action should be taken to solve this problem. We have looked at a number of possibilities, the most workable being to put in kerb stones and posts. This would not, however, stop the parking. At a site meeting in February, the NCC Highways Representative suggested a "One Way System" might be the answer and said MGWSP would carry out a feasibility study in the new financial year and pass on the findings to the Parish Council. If the results are positive, then this will offer another option. We shall see!

Setting the budget at the Precept Meeting in December was a bit of a headache. We knew we had to budget for £1500.00 to cover the cost of elections in May 2011. We also took the very difficult decision to cover the cost of kerbing and reinstatement of the green, which I have mentioned above, and set aside £8000.00 for this work. Both of these payments were one-off and would have

to be settled immediately, so could not be spread over several years. On top of this, the EU decreed that all street lights must be updated and standardised. White Mercury Vapour lanterns must be replaced by white or yellow Sox lanterns, and all concrete poles must be replaced by galvanised steel columns, by the year 2015. The total cost for these works in Kislingbury, at current prices, would be £7817.36, so we budgeted for £2200.00 for the first year. In addition, the annual budget for grass mowing is £5000.00 and Village Maintenance, which includes in excess of £1400.00 for emptying Dog Waste Bins, is £2000.00. To offset some of these outgoings, the Council agreed to withdraw the annual grant of £1800.00 to the Village Hall and the £200.00 grant to the Kislingbury News, and reduce the £1500.00 grant to the KPFA by £500.00. This will be for one year and will be reviewed at the Precept Meeting in December 2011. After much deliberation, taking all these things into consideration, the Parish Council decided to increase the precept for 2011/2012 from £19,000.00 to £20,000.00.

For several years we have been trying to get a pedestrian crossing installed on the Bugbrooke Road, in the vicinity of the bus stops. We have always been told that there is not enough room to put a crossing between the bus stops, where it would be of most use. With the increase in traffic over the years, the Bugbrooke road has become much busier and much more dangerous. Many 'close shaves' have been reported, with youngsters nipping across the road in the morning and afternoon school bus rush and there are equally as many stories of villagers waiting 10 minutes, or more, to find a gap in the traffic, so that they could cross the road. So last September, we had site meetings, in the vicinity of the bus stops, with Helen Howard, Highways Liaison Person from NCC/MGWSP. Helen monitored the number of pedestrians crossing the road, and where they crossed, for about an hour from 8 o'clock in the morning and, again for an hour, from 3 o'clock in the afternoon. As a follow up, engineers inspected the site and reported that there was not enough room to install a crossing where it would be of most use, i.e. between Twigden Road and Ashby Court, where most people crossed the road, and with the close proximity of Mill Lane opposite. A crossing on the other side of Ashby Court would be less likely to be used because it was further away and it would involve the installation of a footpath, which was currently beyond the constraints of the budget. So no hope of a pedestrian crossing for the time being!

At the Annual Parish Meeting last year, a parishioner put forward the idea of setting up a village email data base. Parish Council followed up the suggestion, obtained information from Gayton, where a data base was already in operation, and then asked willing parishioners if they would look into the possibility of setting up a database in Kislingbury. Tim Ward and Paul Huband took up the challenge and, ably assisted by Keith Marsden, are making very satisfactory progress, with over one hundred households now registered. We on the Parish Council are not directly involved in the project and take no part in it's management, but we maintain a lively interest in it's progress and would like to thank Tim, Paul and Keith for their hard work and enthusiasm.

Last year I reported that two major planning applications, each for 26 dwellings, and one smaller one for 10 dwellings, had been submitted to South Northants

Council Planning and were awaiting a decision. Two of these applications were subsequently refused and the third, for 26 dwellings on land adjacent to the Bugbrooke Road, submitted by Persimmon, was granted outline planning permission. Persimmon later put in an application for reserved matters which SNC permitted. However, the development is now on hold, pending the outcome of a legal challenge by Mr S Hopewell, who believed the decision by SNC planners to refuse him permission to develop his land off Beech Lane was flawed, and that they were wrong to grant Persimmon permission in the way that they did. With the judicial system being what it is, this could take many months.

The West Northamptonshire Emergent Joint Core Strategy was published for consultation in July 2009. The proposal was to build 62,000 homes in West Northamptonshire and to develop 167 hectares of open countryside at Junction 16 of the M1. Right in our back yard! The Parish Council responded to the WNEJCS in a strongly worded letter of objection and vowed to fight to keep the developers away from Kislingbury and to retain a 'green buffer' on all sides of the village. Kislingbury Action Group, working alongside, but independent of, the Parish Council, did the same. Since then, we have been waiting to see what would happen next. In February this year The West Northamptonshire Joint Strategic Planning Committee adopted the Pre Submission Joint Core Strategy and sent it out for consultation. It is similar to the previous document published in July 2009, but plans to build fewer houses and doesn't mention development at Junction 16, but this doesn't mean that it is out of the frame. The Parish Council responded to this document, as previously, with the aim of keeping Northampton Borough at bay and retaining our status as a rural village. It was no easy task, formulating a response to such an important document and I would like to thank Kislingbury Action Group and Mid Northants Parishes Group for all the help they gave us in this matter.

Just about every week, members of the council receive complaints about dog fouling and the fact that some owners do not clear up the mess their dogs make. We are at a loss as to what to do about such behaviour. These people appear to be totally lacking in social conscience and completely unconcerned about the diseases which can be passed on from their dogs faeces to human beings and to other animals. This is a problem that never seems to go away. We can only continue to plead with people to be responsible and to clear up after their pets, wherever they are, be it in the village or in the surrounding countryside.

The Parish Council website was launched in January last year. It is still a work in progress and we are hoping to improve it and add to it in the coming months. Thank you to those people who log on and who offer us constructive criticism and advice.

In October last year, our Archivists, Lisa Dickson and Felicity Dunkley, attended the Parish Council Meeting and demonstrated how they have organised the treasures that have become a part of the Village Archive. We were very impressed with the set up and would recommend that you go along and see what they have done for the village. They have put a tremendous amount of time and effort into this project and deserve our support. Our thanks to both of them.

Throughout the year we have received many phone calls and emails from residents to let us know when something is wrong in the village. It enables us

to take action more quickly to try and put it right. Although we do our best to keep an eye out for what needs doing it isn't possible to pick up on everything and we do appreciate the help we receive from parishioners. So thank you all and keep your calls coming in.

I would also like to say thank you to our Neighbourhood Watch Co-ordinator, Tim Ward and to his band of street volunteers. We are grateful for the prompt warnings of potential trouble and the advice on how to deal with unwanted callers at our door. But Neighbourhood Watch isn't just about crime and Tim makes sure we know the latest on keeping ourselves and our property safe and sound.

Our Parish Wardens have continued to carry out their duties with quiet efficiency. It is comforting to know that they are there to keep an eye out for potential problems and to deal with them as and when required. So to our Flood and Snow Warden Dennis Tidmarsh and his Deputy, Leslie Hartwell, to our Footpath Warden, Phil Beeston and to our Tree Warden, Alex Balbi, we say a big 'Thank you' for all you have done for the parish throughout the year.

My final thanks go to my fellow councillors and to our Parish Clerk, Ann Addison, for their hard work and commitment during the past year. On a more personal note, I would like to say a big thank you to them all for the help and support they have given to me, as Chairman of Kislingbury Parish Council.

Pauline Cook - Chairman Kislingbury Parish Council

KISLINGBURY DIAMOND JUBILEE CELEBRATIONS

We celebrated the Golden Jubilee in style

Can we do the same for the

Queen's Diamond Jubilee?

HAVE YOU GOT ANY IDEAS?

WILL YOU HELP?

Please come along to a meeting in the Village Hall

Wednesday 11th May at 7.30pm

YOUR VILLAGE NEEDS YOU

Please ring Pauline on 831003 or just turn up on the night

THE DANGERS OF DOG DIRT - A follow up from last month

NOBODY PANIC

I read last month's comment about dog fouling and agree that contact with faeces is unpleasant and where appropriate they should be picked up and put in the bins provided. However no one should be panicked either. After last month's lecture on the dangers of dog dirt I decided to do a little research.

TOXOCARIASIS CANIS

I asked a cross section of dog owners in Kislingbury about how they wormed their dogs and was not in the least surprised to hear that EVERY single one of them regularly wormed their dogs to protect the health of their families as well as that of their pets. Dog owners are better informed and more caring than the previous writer seems to think.

NEOSPOROSIS

There are many reasons why cows abort and neosporosis causes less than 10%. Cows that are carriers may not show any symptoms but pass the parasite when they calve. For a dog to become a carrier it would have to eat some of the afterbirth of an affected animal. This may be a problem with farm dogs or foxes but how many pets have access to infected material?

I am not being complacent, the health and welfare of people and all animals should never be ignored. However just keep things in proportion!

Margaret Challans

Thank You

To the Parish Council for approving and ordering of
2 finger signs for The Sun Inn.

These are attached to lamp posts on High Street and
Bugbrooke Road indicating the direction to
"The Sun/Historic Inn"

Thank you from Pam & Graham.

Do you require A4 Copying?

Printing Prices

50 Copies (one sided)	£4.00
50 Copies (double sided)	£6.00
100 Copies (one sided)	£8.00
100 Copies (double sided)	£12.00

**Please call Kenneth Tonge on
01604 830421 for any further information**

Kislingbury Cycle Club - First Group Ride

Interested in Cycling?

Want to increase your fitness levels?

Looking to discover new cycling routes in the countryside that are fun and challenging?

Want to join with other riders to give you that extra support and encouragement?

There are many cyclists in the village who have found cycling as a way of increasing their fitness levels and at the same time appreciating what the countryside of Northamptonshire has to offer. Others have bikes but do not know the roads well enough to plan a cycle ride along quiet country lanes. For others they need that little bit of encouragement to make that first step by riding with other cyclists.

If there is enough interest I am setting up the Kislingbury Cycle Club. The idea is to meet up once a month for an organised ride where you will be given a route map and encouraged to ride in small groups of similar ability. In order to build up confidence for beginners, and as an additional challenge for more experienced riders, two routes will be available. The shorter route will be around 25 miles and the longer route around 40 miles. Parents should ensure that children are accompanied and/or experienced enough for rides of this length.

The first ride will leave Kislingbury Playing Field on Saturday 4th June at 10am. Choose the route that will take you around 2½ hours to complete and then the whole group can meet up at The Sun from around 12.30pm onwards to recover!!

Please register your interest to take part in this first ride and to receive details of this and future rides at:

kislingburynews@hotmail.co.uk

David Lawrence

Village Fayre Weekend - Notice Board

Sat 25th & Sun 26th June



WANTED

To book a **STALL** on the Church Green to sell or display on Saturday 25th - or register as a general helper! Please call Paul Huband on 07989 743501

To book a **STALL** in the Church on Saturday 25th - or - To display a **CLASSIC CAR** on Sunday 26th. Please telephone Steve Goss 832761

To register your **OPEN GARDEN** for Sat 25th and/or Sun 26th please call Avril or Roger Minchin on 830435

To take part in the **ENTERTAINMENT** on Saturday 25th
To donate books for the **BOOK STALL** or prizes for the **TOMBOLA**, **RAFFLE** and **CHILDREN'S TOMBOLA** call Tony on 830818 or **DROP OFF** to 16 MILL ROAD

SPONSORS - to find out how to sponsor part of the Village Fayre or to **ADVERTISE** in the Fayre Programme Call Bernard Gent on 830579

NEW IDEA is anybody out there up for organising and running on the day a **TUG-OF-WAR TOURNAMENT**?

Also wanted someone to co-ordinate the weekend **BBQs** organising manpower, supplies, logistics etc. call Steve 832761 or Paul 07989 743501



Kislingbury Fayre Stop Press

On the Sunday of the Fayre (26th June) there will be a mini 'silly' sports event, which all members of the family can take part in. Races are likely to include themes such as an egg and spoon race, slow bicycle race etc. If your family or members of your family would like to take part could you please contact Emma Remington on 07764 794835.

The Parish Church of St Luke

On Sunday 22nd May our Mothers Union Group will be leading the service of Morning Worship at 11.15am. Please come and give them your support!

PRAYER GROUP

This is a new venture when we will be meeting in the church on the first Tuesday morning of each month at 10.00am starting on 3rd May.

We will be praying not only for our own church life but also for the sick and those needing our prayers during difficult times. The meetings will last for approximately half an hour and are available for anyone to attend and for as long as you wish. Please contact Sue Payler (830615) for personal prayer requests.

"You may pray for an hour and still not pray. You may meet God for a moment and then be in touch with Him all day."

OUR NEXT CLEANING/GARDENING MORNING IS ON SATURDAY 14th MAY - 10am

This will be combined with the setting up of the

NEARLY NEW SALE - SATURDAY 14th MAY 2.00pm-4.30pm

Back by popular demand!

If you have any suitable items for this sale, please inform Gill Cooke, Anne Hoodak, Leslie Hartwell or Judith Tonge. We will also be having a bottle stall and a cake stall (offers to make cakes nearer the time would be gratefully received - any bottles we will happily take off your hands now!)

FORTHCOMING EVENTS

Sunday 12th June An invitation to partake of a cuppa and a piece of cake in the garden at 3 Church Lane - (weather permitting!) Have a relaxing afternoon and wander round the garden at your leisure. 2.30pm - 5pm. In aid of Church funds.

Sunday afternoons in July Cream Teas in the church - 3pm - 5pm

Come on - Own Up – Who’s to Blame?

We tend to greet the morning post with a mixture of expectation and apprehension. There could be good news, an unexpected prize from one of those television multi choice question competitions! What is the capital city of Britain, is it (a) London or (b) 1948, you know the ones I’m on about!

However, (along with all the ever increasing amount of junk mail), it's quite possibly one of those faceless characterless envelopes containing some bill or other request. Even worse, it’s one of those red reminders for a bill that should have been paid yesterday, together with a threat of what will happen if you don't swiftly act and pay up now!

Not so long back I received one of those 'even worse' letters, along with the obligatory strongly worded threat of what would happen if I did not pay the said account. However, in this incident I had paid the said bill sometime previously and an electronic receipt as proof of payment.

A phone call to the business concerned led to an extended conversation which was interspersed quite often with the phrase, "Oh just ignore it". Me being me, I was not satisfied with this and repeatedly pushed for an explanation. Eventually after ten minutes or so talking to the person on the other end of the phone, then their supervisor and finally the manager I got what I should have received in the first place, a simple "I'm sorry sir, we’ve made a mistake". To make such an admission is a very rare occurrence indeed these days.

People today seem to be intent either on transferring the blame e.g. 'It's the computer's fault', "the person dealing with this left last week" or, finding some organisation to blame or sue. Take for example the many human made disasters over recent years, someone or something has had to take the blame be sued, or both. Rarely does anyone admit to being wrong or mistaken, and even then, when an oversight or mistake is admitted, no one wants to forgive and the whole thing is left to fester. Whatever the cost, a pound of flesh has to be extracted from one source or another.

For us to live together in love, mutuality, equality and respect we need to be free to own up to our mistakes without fear of litigation, to accept each others shortcomings, say sorry and mean it, accept the apology with grace and where necessary (perhaps hardest of all), learn to forgive and seek to forget and it starts with you and me.

Stephen French Rector of Bugbrooke, Harpole, Kislingbury and Rothersthorpe

P.S. Jesus, as he hung and dying on the cross, due to a jumped up charge and court did not say "You’ve got it wrong so be dammed". He quite simply said **"Forgive them, Father! They know not what they are doing"**.

Thank You

Mrs Patricia McGarry and family would like to thank all her friends and neighbours for their support following her recent stays in Northampton General Hospital.

Neighbourhood Watch Newsletter - Kislingbury News May 2011

Village news - After last month when I reported an increase in incidents it appears that we have had a quiet month. There have been few Police reports for circulation to the Street Representatives so I can only assume that our region is also enjoying a relatively quiet time. I show below the information for our Village and the Region which I have received in the Crime Report for March.

Kislingbury – Banbury Road. Burglary in a building [not dwelling] between the hours of 2230 on 28th and 0200 on 29th Mar 2011. Person[s] gain entry to building via secure door and remove copper wiring. **Banbury Road.** Burglary in a building [not dwelling]between the hours of 2300 on 30th and 0800 on 31st Mar 2011. Person[s] gain entry to building by damaging wooden door. Various items removed including copper piping. **High Street** . Criminal damage to building between the hours of 0020 and 0900 on 26th Mar 2011. Person[s] throw unknown object at front window of premise causing glass to smash. **Mill Road.** Criminal damage to vehicle between the hours of 2300 on 11th and 1100 on 12th Mar 2011. Person[s] damage three tyres on vehicle. **Twigden Road.** Theft from vehicle between the hours of 1000 and 2245 on 11th Mar 2011. Person[s] remove front and rear registration plate from vehicle

It is very important to tell the Police that an incident is happening, or as soon after as you can. If we do not tell them, and the thieves see no Police response, they will conclude that Kislingbury is easy pickings and come back again. The Police do not mind getting calls. More importantly they need the calls to help them fight Crime. Please use 999 for Emergencies or the number 01604 432 436 to report what you see immediately, or call me on 07855 388 751, if you want to report a crime or something or somebody suspicious.

Local news - Based on the monthly Police Crime Report.

Gayton – Wrights Lane, 2 Crimes - Siphoning Fuel from car, items removed from Farm Land

Milton Malsor – 2 Crimes - Plants removed from Planter, and Registration Plates removed from Vehicle

Rothersthorpe – 1 Crime - Milton Malsor Road - 30 Crash Barriers removed.

Harpole – 1 Crime - Burglary in Building [not dwelling]. Items removed.

For full details of the March Crime Report please visit <http://nhw.kislingburyonline.co.uk/>

FREE Fire Safety Check from the Fire Service. Villagers are taking advantage of this FREE offer, and I encourage you to do the same. This offer is still open so contact me if you would like to take advantage of the FREE Fire Service expertise to make your home safer. Please contact me if you wish to have a visit and I will get it arranged. DON'T MISS OUT ON HAVING YOUR HOME ASSESSED!

We still need more Volunteers for Streets not yet covered. Please see the Village Web site for the full list of Street Representatives at.

<http://nhw.kislingburyonline.co.uk/2010/09/street-representatives.html>.

VILLAGE EMAIL DATABASE

Well over 100 Houses in the Village are now registered on the Database. They will now be able to receive urgent NHW messages direct, and important Village information. If you are not on the database we cannot contact you.

BE ON IT, TO GET IT!!!

Visit the Village Website, click on the Email Database link, and subscribe. It is very easy! Go to **www.kislingburyonline.co.uk**

Remember, and use, the following numbers to report crimes or other incidents.

Police : 999 for an emergency or to Report a Crime. Non Emergency Police Number 01604 432 436. Police Community Support - Jen Harrison 03000 111 222. Crimestoppers (Anonymous) 0800 555 111.

Tim Ward

07855 388 751 and timwarduk@aol.com

Kislingbury Temperance Cricket & Social Club

The Cricket season is about to start and the home fixtures for May are as follows:

7th May 1st Team v Gretton

14th May 2nd Team v ON's 5th

21st May 1st Team v Badby

28th May 2nd Team v Grendon & Prims 2nd

4th June 2nd Team v Loddington & Mawsley 4th

All these matches are 1.30pm start and we welcome your support so please come along. The bar will be open for both hot & cold drinks plus crisps and snacks.

Regular Events that happen at the club

Monday nights we will be open from 6pm with Outdoor cricket nets and League darts matches starting at 8.30pm plus live football on Sky Sports.

Wednesday nights we are open from 5.30pm with Happy Hour from 5.30pm until 8pm followed by the weekly quiz which is £1 per person to enter and comprises of 15 Questions, then break for picture round and free nibbles and then 15 more questions.

Saturday nights Bingo at 9pm & 10pm.

We are also open on Fridays from 6pm until 11pm, Saturdays 12noon until 11pm and Sundays 12noon until 6.30pm.

We are always looking for new members and with membership costing just £2 per person we hope you will join. Why not pop down and see what we have to offer.

Toni and the Committee

A Tale from Kislingbury Archives

Taken from The Village Scrapbook - Births and Babies in 1890's
The midwife dealt with the birth and had no training except experience. Doctors were never called in except in the "big houses" until the beginning of the century and then only occasionally. The babies were registered at Mr. Killingbeck's in the village. For three months all the babies were dressed in long clothes, swathes, flannel binders, flannels with veils and quilted cloaks to go out in. New babies were always carried in shawls when they were tiny and only had prams later, perhaps a high three-wheeled one. At three months the babies were "shortened" and put into white flannelette petticoats, a flannel frock and tie-ups, which were ribbons to tie up the puffed sleeves. They were swathed tightly until 12 months old. Mothers fed their babies for a long time and they were not weaned until they were 12 - 14 months old and sometimes not until they were 3 or 4 years old. Then they were fed from boat-shaped babies bottles which could never be cleaned properly even with the brush supplied. There was a long rubber tube attached with a teat at the end so that the bottle could be put in the cradle and the tube into the baby's mouth. Most babies also sucked dummies.....
to be continued next month.....

If you have any information or photos that you would be willing to let us have for the Archives, please contact:

Lisa Dickson 832092

Felicity Dunkley 830514

RachyCakes



"RachyCakes" is the modern approach to celebration cakes, cupcakes and other bakery items. We believe that cakes should taste as good as they look and we offer a huge range of flavour combinations, and we are happy to create even more by demand!

We also supply some rather unusual other bakery items such as "Cake-Pops" and "Pie-Pops". All our creations are individually made to order so they can be designed exactly to your specifications. For further details visit www.rachycakes.co.uk

Kislingbury over Fifties

MAY NEWS

Following a successful pre-wedding party to celebrate the marriage of Kate and William, the KOFs are now looking forward to their Summer activities.

On FRIDAY JUNE 10th, 44 members have booked for the STRATFORD UPON AVON Coach & Boat trip with lunch whilst cruising on the river Avon

THURSDAY 14th JULY Lunchtime SUMMER BARBECUE is now organised with a local PIG ROAST and entertainment for the members. A great event not to be missed

SEPTEMBER 23rd - 26th

KOFS WEEKEND AWAY AT

WARNERS THORESBY HALL HOTEL

near SHERWOOD FOREST in NOTTINGHAMSHIRE.

The KOFs weekend package includes a coach to and from the village plus a full day Saturday Coach trip into Derbyshire.

This is the second year that the KOFs have organised this weekend away, which is proving to be very popular

A WARM WELCOME TO ALL THE OVER FIFTIES

Every Thursday, 10.30 am at the VILLAGE HALL, over 40 members meet for a coffee/tea and chat. We hear the latest news that is of interest to the members.

We have over 100 members and always welcome new members to come along and join us.

The membership is Free.

Contact the committee for further information

Eddie Harley 830001

Mike Jackson 831747

Dennis Tidmarsh 830074

Bernard Gent 830579

Ann Davies 830122



Kislisbury Art Group

May News

**The Winter/Spring sessions of the Art Group (KAG)
finished on Thursday 14th April**

As a result of the afternoon sessions proving to be popular, it has been decided to organise another series of sessions commencing this September 2011

We have 4 remaining places available and warmly welcome new members to come along and join us in September.

The group is organised, to provide a venue for artists of all abilities from beginners to fully experienced, to meet together, to paint, and share the company of others with similar interests, in a non formalised group.

We meet on Thursday afternoons at the Village Hall between 2.30pm and 4.30pm.

EVERYONE WELCOME

For further information please contact

Judith Tonge 01604830421

Mike Jackson 01604 831747

Bugbrooke Art Group

Our annual Art Exhibition this year will be held on the weekend of 7th and 8th May, at the Community Centre, Camp Hill, Bugbrooke.

The exhibition will be open from 11am to 5pm on both days. Most of the work on display will be for sale.

Entrance is free, and as well as the works of art, there will be original hand painted cards for sale. Homemade cakes, tea and coffee are all available at very reasonable prices.

We are always pleased to welcome new members and the exhibition is a good opportunity for anyone interested to come and talk to us.

We meet every Tuesday evening at the Community Centre, from 7.30pm to 9.30pm.

Kislingbury CE Primary School

12 Values become 23!

Thank you to everyone who took part in the survey designed to find 11 more Values to add to those we already have in place. The Governors, Staff, Community and most importantly the Children have all contributed to our new values which we will be focusing on for the next 11 months. They are:

Peace Reflectiveness Caring
Bravery Patience Helpfulness
Imagination Forgiveness Generosity
Reciprocity Humility

Community Values Group

The next meeting of the Community Values Group will take place on Thursday 12th May at 6.00pm at The Cromwell. Please come along and find out more....

Value of the Month

The Value of the Month for May is '**Reflectiveness**'. In school we are focusing on how being a reflective learner can help us to understand how we can learn more effectively through a combination of careful planning and flexibility.

As we grow older to take to time to reflect on our experiences of life as they come our way is very important as it enables us to learn from our mistakes and to appreciate what we have. Charles Dickens once wrote: 'Reflect upon your present blessings - of which everyone has many - not on your past misfortunes, of which everyone has some.'

Janet Northing (Headteacher)

Upper Nene Villages 3rd Age Group - U3A

MONDAY 16 MAY 2011

ANNUAL GENERAL MEETING AND LUNCH

The meeting Agenda will cover the Chairman's & Treasurer's reports, the election and re-election of the Committee and any matters arising. This will be followed by the usual delicious lunch provided by the generosity of our members and organised by the 'Luncheon Club' members. Please bring your own plate cutlery, glass and drink - dessert plates will be provided. Please ensure you have renewed your subscription if you wish to attend the meeting and lunch.

Meetings are open to non-members and take place at Bugbrooke Community Centre, Camp Hill, Bugbrooke on the 3rd Monday of each month at 2.30pm For further information contact Fay Maddern 01327 352401.

SPECIAL INTEREST GROUPS: Antiques Trail, Appreciating Poetry, Book Exchange, Bridge, Collectors Club, French beginners, French Intermediate, Genealogy, German intermediate, History of Music, Literature Group, Luncheon Club, 'My Kind of Music', Scrabble, Snooker, Spanish Beginners, Writing Family History.

THE ROLAND MILLS MEMORIAL FUND

Charity Football Match

Ex-international and professional players v Past & Present Cobblers Players



21st May K.O. 1pm

Sixfields Stadium



*All monies raised will go to the Alzheimer's Society
Adults = £8, Under 16's = £5, Children under 10 = Free
Tickets available on the gate*



Kislingbury Art & Craft Society

The next meeting will be **on Tuesday 24th May when the speaker will be Martin Heath of BBC Radio Northampton.**

We start at 8.00pm in the Village Hall and visitors will find a warm welcome awaiting them as well as a cup of tea/coffee and biscuits. We ask for a donation of just £1.00 from visitors.

The June meeting will on a musical note – when Mr. Mike Johnson will be bringing along his memories on 78rpm records. So put the date in your diary – **Tuesday 28th June at 8.00pm.**

Doreen Hartwell

Kislingbury Playing Field Association

MAY **KPFA** NEWS

KEITH DURHAM - Retiring Chairman of the KPFA

At the AGM on the 29th March, Keith Durham the Chairman of the KPFA for the past eight years, retired and Phil Beeston was elected as the new Chairman.

Phil Beeston thanked Keith for his significant contribution to the development of the KPFA during his term in office, during which time he had been involved with both the flood bunds that impacted on the Playing Field, as well as acquiring additional land, for a second football pitch and other sports facilities. His support and encouragement to many village organisations, helped to raise money for the Children's Play Area equipment at the Playing Field. Keith was warmly applauded and thanked by all the KPFA members.

Having invested over £5,000 into the Children's Play area equipment over the past few months, we are keen to avoid damage through mindless vandalism, and would request that you advise a member of the KPFA or the police (03000 111 222) if you observe any vandalism on the site.

REMEMBER THE PLAYING FIELD BELONGS TO EVERYONE IN THE VILLAGE, AND AS SUCH, LET'S LOOK AFTER THIS IMPORTANT VILLAGE FACILITY

DOG FOULING

PLEASE HELP US TO KEEP OUR PLAYING FIELD CLEAR OF DOG'S MESS FOR THE BENEFIT OF PLAYERS, ADULTS and in particular CHILDREN

WHEN IN THE PLAYING FIELD PLEASE KEEP YOUR DOGS ON A LEAD. THANK YOU.



Light Up St. Lukes

This month June Newman drew the ticket in the April draw and the winner was Bernard Gent.

Leslie Hartwell

The Sun Inn

Pub of the Week

Northampton Chronicle & Echo

9th April

Publicans: Pam and Graham Burgess have been running the pub since 2008

Age of pub: The pub was once a farmhouse but became a pub in 1866 and has been a pub ever since.

The pub also has an aviary at the back.

Beers: The pub keeps eight real ales and regularly serves Greene King IPA and Broadside from Adnams. The others change regularly throughout the year and in recent weeks have included Hurleys Irish, Hoggleys IPA, Great Oakley Wot's Occurring and a Welsh cider called Black Dragon.

Events: The pub runs a regular Sunday night quiz and every June plays host to an evening of Morris Dancing.

Telephone: Northampton 833571

Zumba Fitness Classes

Summer is almost here.....

Why not Ditch the workout, join the party!!!

With Cheryl fully qualified fitness instructor and level 3 Pilates teacher and exercise referral specialist

Classes are now held at the following venues:

Zumba Gold - Harpole Old School Hall

Every Monday Morning, 9.15am -10.00am

This class is suitable for the active older participant or those just starting out and wanting to improve their fitness levels!

Zumba at Bugbrooke Primary School

High Street, Bugbrooke

Every Tuesday, 7.30pm - 8.30pm

Zumba at Harlestone Institute, Upper Harlestone Village

Every Thursday, 6.30pm - 7.30pm

Fitness/Pilates Classes

Harpole Old School Hall, School Lane

Every Thursday 7.45pm - 8.45pm

Suitable for all age groups and levels

Improves posture and may help with back pain, tones thighs, tummy and buttocks
1:1 and small group personal training also available

To book and for more info please call Cheryl: 07931560734 or 01604 467495

email: cherylgorman123@msn.com

Man-Tools-Help

Do you need another pair of hands? Or the use of the odd power tool or ladder?

In the Home or Garden
maybe for the annual
Hedge or Fence
Maintenance!

Scheduled or ad-hoc visits....

**simple - charge rate:
£8.00 per - 20 minutes..**

support also provided to
associated trades at discounted
daily rates....

mobile: 07941 522 000
kislingbury: 830 717

Man with Van

Disposal of household and
unwanted garden items...

Collection from retail shop
warehouse or depot...

Deliveries to anywhere at
anytime...

Help with moving single
or multiple items...

**simple - charge rates:
50 pence - per minute..
£10.00 per - 30 minutes..
or £1.50 - per mile...**

mobile: 07941 522 000
kislingbury: 830 717

*3Bx*photography

Our **professional photographic studio** is situated in **Whittlebury** minutes from **Towcester** and is a great place to capture **memorable pictures** of you and your family and have fun at the same time! For an informal chat about a **photo-shoot** give me a call on the numbers below and visit the website at:

www.3bxphotography.co.uk

A full session is only £25.00 including a **free framed print!**

The Corner Barn

Home Farm Business Park

Church Way Whittlebury NN12 8XS

E Mail: Mike@3bxphotography.co.uk

Tel: Studio 01327 850500. Mob. 07803833769

Weddings Portrait and Event Photography

A.C. HARRISON
GENERAL BUILDER

City & Guilds Qualified

Over 28 Years Experience

BRICK & STONEWORK ♦ DRIVEWAYS & PATIOS
BLOCKPAVING ♦ GROUNDWORKS ♦ LANDSCAPING
EXTENSIONS & ALTERATIONS

**NEW CLEANING SERVICE
FOR DRIVEWAYS AND PATIOS**

36 Willow View, Kilsingbary, Northants NN7 4RT

ALL WORK IS FULLY INSURED

Tel: 01604 832181

Mobile: 07932 802287

come and join us!

stories

activities

St Lukes

Sunday Group

First Sunday of every month

games

snacks

yoga

We will meet at 11am till 12.00
every month. At 12.15 we will join our adults in St Lukes Church.

Call Gill Clarke to confirm meeting place on **830346**

John Masters

Established 1980

Painting and Decorating Services

Interior – Exterior – Period Work
Professional, Friendly & Reliable
Estimates and Advice Free
References Gladly Supplied
Quality Work Guaranteed

Tel: 01604 830632

Mobile: 07718 283765

**E-mail: jmasters_decorating@hotmail.co.uk
40 Mill Lane, Kislingbury, Northampton NN7 4BD**

**DILL THOMAS, 12 WILLOW VIEW, KISLINGBURY
NORTHAMPTON**

**CARPETS & FLOORING ALL SUPPLIED AND FITTED
CARPETS, VINYL, AMTICO, ALTRO, KARNDAN, WOOD,
WET ROOM FLOORS**

OVER 35 YEARS EXPERIENCE

FOR FREE QUOTATION TELEPHONE: 07810 280 510

**Do you sometimes
wish someone would
listen to you?**

Avril Collett
Dip Couns. BACP registered

**Integrative
Counselling for
people with a
life to live!**

01604 831354 OR 07808 339449

Olde Red Lion



*...putting Kislingbury on the
'Culinary Map' with dining
for the discerning diner!*

Telephone (01604) 830219

WINNER

NORTHAMPTONSHIRE

**FOOD
& DRINK
AWARDS
2010/11**

**BEST PUB
RESTAURANT**

**picture
framing**

**YOUR LOCAL
FRAMING SERVICE
FOR... PICTURES,
COLLECTIBLES,
MEMORABILIA &
RECORD SLEEVES**

Call TONY on 830818
(there is an answerphone if I'm out)
16 MILL ROAD, KISLINGBURY

**ABBOTTS
LANDSCAPE & DESIGN**

If a happier year means letting our family business take care of all your gardening needs, from a regular lawn cut to a full Design and Landscape, then please give us a call for a no obligation quote.

**STEVEN ABBOTT
9 CAMP HILL
BUGBROOKE
NORTHAMPTON
NN7 3PH**

**TEL. 01604 830523
MOB. 07930 737865**



HOLLYBANK
HOME
IMPROVEMENTS

Painting & Decorating

Plumbing

Carpentry

Garden Tidies

Pressure Washing

Hardwood & Laminate Floor Fitting

Preparing a property for the rental market or sale

Bathroom & Kitchen Design, Refurbishment & Installation

Completing those DIY jobs you never had time to finish

FULLY INSURED

Call or email Trevor or Lisa for a free quote:

01604 830467 / 07866 569218

hollybankltd@btinternet.com

www.hollybankltd.co.uk

General Property Repairs

Stud Walling

Decking

Flat Pack Assembly

Floor and Wall Tiling

Plaster Boarding & Plastering



SMALL JOBS
SERVICE

**Small gardening or
household DIY jobs
carried out**

Estimates given

Robin Corlett
7 The Orchard
Kislingbury

Tel: 830956

**Cakes for all
Occasions
Wedding Cakes
& Celebration Cakes
Made to Order
(Est. 1994)**



Sarah Mayo
HND MRIPHH
Hollybank 5 The Orchard
Kislingbury
Northampton
NN7 4BG
Telephone 01604 832859

Thompson's Carpet

Carpets
Flotex

Cushion Flooring
Carpet Tiles

Quality at competitive prices

All types of carpet supplied and fitted
for your home or office

Free estimates with no obligation

Also carpet cleaning (domestic and office)

Walt Thompson

39 Howard Lane, Boughton

Telephone: 01604 843636

Mobile: 07710 282271

S&S Automotive Est. 20 Years

Your local garage

For all your motoring needs

All makes and models

Servicing, MOT's, Brakes

Clutches, Air-Con, and

Engine Diagnostics

No need to drive to town

We collect and deliver

Telephone – 01604 588665 or

Mobile – 07860 842513

For a 10% discount quote code: KN1

44 Weedon Road, St. James
(200 metres from Saints Ground)

Chiropody Treatment

Do you suffer from corns, hard skin, bunions or verrucae?

Do your feet hurt at the end of the day?

Have your feet cared for in the comfort of your own home

Ken Bright
MBChA, MSSCh
Tel 406741

£ 19 per Visit!



Party yourself into shape
Tuesdays 7.30-8.30pm
@ Kislingbury Village Hall
starting on 26th April

Contact Sue for more details
and to book your place in the
class.

07990 516650

sue.finney@btinternet.com

Classes also at The Elgar Centre,
Upton and Franklins Gardens -
please ask for details.

T. I. L

(THE IRONING LADY)



Loves To Do The Job You Hate!

UNDER NEW OWNERSHIP

Ironing Service available for
Kislingbury and Surrounding
Villages.

Fast, Efficient and Friendly.

Regular and One Off Service Avail-
able.

TELEPHONE: - 01604-831882

MOBILE: - 07778382633

**CLEANING SERVICE ALSO
AVAILABLE**

ALL YEAR
GARDEN SERVICES

Garden Tidy

Grass Cutting

Hedge Cutting

Tree Work

Shed and Fence Treated

Tel: 01604 833663

Or 07736 489790

Full public liability insurance



K Banner

Quality Painter and Decorator

64 Larkhall Lane

Harpole

Northampton

NN7 4DP

Tel: 01604 831933

Mobile: 07801 710681



Kidz Church
10.30 Every Sunday
Kislingbury Baptist Church

Stories, Activities and Lots
of fun

M PAYNE & SONS - GARDENING CARE

LAWNS CUT - HEDGES TRIMMED
TREE WORK - FENCING/DECKING
BLOCK PAVING/PATIOS - GUTTERS CLEANED
GENERAL TIDY UP - HANDY MAN

Local Village Man

Kislingbury

Telephone: 01604 833649 Mobile: 07761742997

Brian Lawrence
Building & Decorating Contractor

10 Whittles Cross, Wootton, Northampton NN4 6BG

Tel: 01604 675567 Fax: 01604 706932

Mobile 07860 509043

Email: lawrence.j@btinternet.com

Established since 1957

Local Authority and Diocesan Approved Contractor

All aspects of building, general maintenance
and decorating, etc.

Domestic and Commercial

Free advice and quotation service

Contact James Lawrence



The Parish Church of St Luke Services at St Luke's

- Sunday 1st May
11.15am Holy Communion - Sunday Group at 11am
- Tuesday 3rd May
10.00am Prayer Group in church
- Wednesday 4th May
10.30am Midweek Holy Communion
- Sunday 8th May
8.00am Holy Communion
11.15am Morning Worship
- Sunday 15th May
11.15am Holy Communion
- Sunday 22nd May
11.15am Morning Worship led by the Mothers Union
- Sunday 29th May NO SERVICE AT KISLINGBURY - BENEFICE
SERVICE AT BUGBROOKE AT 10.30am.

St Patrick's Catholic Church Duston

Parish Priest: Rev. Philip Swingler

Times of Masses

Saturday for Sunday: 6.00pm
Sunday: 9.30am, 11.00am
Holydays: 9.30am, 7.00pm
Confessions: Sat 10.00am - 11.00pm, 6.45pm - 7.30pm

Kislingbury & Upton Baptist Church

We shall be pleased to welcome you to our church activities including:

Morning Praise and Worship each Sunday at 10.30am followed by tea/coffee. Kidz Church and Crèche also available each week.

Prayer Group each Tuesday 9.30–10.30am.

(If you have any particular prayer requests please make our Pastor, Marilyn Webb, aware of these or drop them off in our church letter box).

Talking Point each Wednesday 10.00am to 12 noon. A get together for mothers and their babies at the Manse, 16 Mill Pond Drive, Upton.

Small Group/Fellowship Evenings Wednesday 7pm onwards.

Kizzletots 9.30am each Thursday in school term time – Parent Toddler group.

Praise evenings 6.15pm on the third Sunday of each month.

Enquiries: 01604 454243 **Email:** pastor@kislingburybaptist.org.uk

ELLIOTT'S

Traditional Family Butchers and Delicatessen

**Beef and Lamb from our own farm and locally sourced
Pork, Free Range Chickens and Game in Season**

**Dry Cured Bacon, Homemade Sausages and Burgers.
A fine selection of Homemade Prize Winning Pork Pies,
Chicken & Ham Pies, Meat Pies and ready meals.
Large selection of Cheeses and Cooked Meats.**

Shops at

Daventry

01327 878984

**By the memorial, opened Spring 2009
Free parking behind shop**

Kislingbury

01604 831533

**Free parking outside shop
Hodges Lane, opposite the Church**

Towcester

01327 350454

**Market Square
Free Parking available in Towcester**