

KISLINGBURY NEWS

April / May 2023



Photograph of the river taken from the bridge by David Lee

Phil Beeston	Footpath Warden Chair - Kislingbury Playing Field Ass. Email: kislingburyplayingfield@hotmail.co.uk	832146
Sue Deane	Margaret Welsh Charity	831834
Miriam Harris	Margaret Welsh Charity	831835
Anne Upton	Village Archivist	833519
Felicity Dunkley	Village Archivist	830514
Chrissie Key	Village Hall Booking Clerk	831824
Sarah Parker	Kislingbury Facebook Highways Charity (Clerk & Trustee)	07840731451
Scott Parker	VAS Signs	07512729422
Chris Payne	Flood & Snow Warden	07917033843
Zoe Kemp	Tree Warden	07813982558
Deni Topliss	Neighbourhood Watch Co-ordinator	07754471120
Alison Ward	Kislingbury Facebook	07770528188

Parish Council Meetings are usually held on the third Tuesday of each month in Kislingbury Village Hall at 7pm. All meetings begin with an opportunity for villagers to ask questions or raise matters of concern. The press and members of the public are welcome to attend.

Minutes can be seen on Parish Notice Boards and online at:

www.kislingburypc.org.uk

Advertising Rates for the Kislingbury News

Residents

Half Page Advert

1 issue £25 / 1 year £60

Quarter Page Advert

1 issue £20 / 1 year £40

Next deadline is

MAY 19th, 2023

Non-Residents

Half Page Advert

1 issue £30 / 1 year £85

Quarter Page Advert

1 issue £25 / 1 year £60

Please send all adverts
and any additional
Information by email in
electronic format to:

kislingburynews@hotmail.co.uk

KISLINGBURY MINI MARKET

POST OFFICE

WIDE RANGE OF PRODUCTS & SERVICES

Fresh Coffee | Bread & Cakes | Dairy | Groceries | Fruit & Veg | Alcohol | Frozen Food | Tobacco | Pet Food | Greeting Cards | National Lottery | Bill Payment | Everyday Banking

DIGITAL ADVERTISING NOW AVAILABLE IN STORE

Shop Opening Hours

Monday to Friday 07:00 - 19:00

Saturday 08:00-19:00

Sunday 08:00 - 16:00

HOME DELIVERY AVAILABLE

Post Office Opening Hours

Monday – Friday 09:00-17:00

Saturday 09:00-12:00

Sunday Closed

PHONE: 01604 830328

Official Royal Mail limited-edition brilliant uncirculated £5 Coin Cover

This is a newly issued, commemorative Coin Cover in memory of Her Majesty Queen Elizabeth II. The Coin Cover includes the Royal Mint's £5 coin alongside Royal Mail's In Memoriam Special Stamps.

Inside the envelope, the insert briefly reflects on The Queen's life, from early childhood to her unwavering dedication to establishing a strong and stable monarchy for the 21st century.

It includes four new stamps featuring images of Her Majesty Queen Elizabeth II taken during her 70-year reign, cancelled by the Windsor Postmark.



If anyone wish to purchase the sought after limited edition cover please see Vid at the Post Office.
Cost £19.99.

April and May 2023

The deadline for the June/July issue is Friday, May 19th, 2023.

Where possible contributions should be sent in electronic format by email to:

kislingburynews@hotmail.co.uk

or delivered to Barbara Floyer, at 6 The Orchard, Kislingbury.

Village Diary

April

- 7th Egg Decorating for children, St Luke's Church, 10am
- 18th Parish Council Meeting, Village Hall, 7pm
- 22nd Village Litter Pick, 10am, meet on The Green
- 22nd Bowls Club Open Day, 2pm - 6pm
- 23rd Bowls Club Open Day, 2pm - 6pm
- 24th Bugbrooke & District Flower Club, 7.30pm, Nether Heyford Village Hall
- 26th Messy Vintage, St Luke's Church, 2.30pm - 4.30pm
- 30th Bowls Club Open Day, 10.30am - 2pm

May

- 16th Parish Council Meeting, Village Hall, 7pm
- 28th Bowls Club Open Day, 10.30am - 2pm
- 29th The Kislingbury Food and Drink Festival, Playing Fields**
- 31st Messy Vintage, St Luke's Church, 2.30pm - 4.30pm

Regular Events

- Play Group open during Term Time at Village Hall
- Bugbrooke and District Flower Club. 4th Monday of the month,
7.30, Nether Heyford Village Hall
- Bell Ringing Monday Nights 7.30pm – 8.30pm
- Pilates - Tuesday, 2pm at Village Hall
- Kislingbury Parish Council meets 3rd Tuesday of every month in the Village Hall
- Kraft Shack Group - Every Wednesday - 8pm**
further information - Tel: 07788737052 or 01604 754518 or
email: mopalmer@gmail.com
- Voyage of Light every 2nd Tuesday of the month excluding January and August.
- KOFs - Every Thursday 10.30am at the Village Hall
- Line Dance Classes in Village Hall - Thursday, Beginners 12.30 -13.30**
& Improvers 13.00 - 15.00 - 07788 737052 or 01604 754518
- Art Group - Thursday afternoons at the Village Hall 2pm - 4pm
- Cycle Club - Meets at Sun Inn every Saturday at 9.30am

Follow the village on Facebook -



@Kislingbury Village Info

Kislingbury Parish Council March 2023

The Parish Council meets at the Village Hall at 7.00 p.m., generally on the third Tuesday of every month apart from August. Our next meeting will be on Tuesday 18th April 2023. Parish Council meetings are, legally, the only context in which the Parish Council can make decisions. Kislingbury residents are always most welcome to attend any Parish Council meeting and have an opportunity to raise any issues as part of the Parishioner's Voice agenda item.

In previous Parish Council Notes, I mentioned that there should have been a decision in September 2023 from West Northants Council about the application to build 58 houses on Camp Lane/Beech Lane.

We have continued to check the planning portal on a regular basis. As a Parish Council we have major concerns about the way that WNC Planning deals with any comments made by the Parish Council and, indeed, by individual villagers. Too often it seems that if local objections are raised about planning applications, these are simply ignored by the Planning Department which also rejects proposals where there are no local objections. The Parish Council's monitoring of the planning portal has made us aware that local comments and objections are never mentioned in planning decisions. To be absolutely fair to the planners, it does seem that some of the codicils added to applications may derive from our comments. Technically, the planning department does not have to take account of local objections but the Parish Council views this as undermining local democracy.

The Parish Council is so concerned about this situation that we have asked our Parish Clerk to explore the possibility of having a village meeting with other local parishes who share our concerns.

At both the February and March Parish Council meetings two issues relating to the Spitfire Development on the Rothersthorpe Road were discussed. The immediate issue is that the balancing pond on the site has to be able to drain via Camp Lane ditches to the Upton Lakes, and subsequently to the river. Our concern is that the ditches are not cleared along the entire length of Camp Lane. We plan to have a site visit at Pembleton to discuss this with the developer with a view to alerting WNC planning of our concerns. In the longer term we are also concerned that Spitfire appears to think that Phase 2 and Phase 3 developments to extend the development along the Rothersthorpe Road area are a 'done deal'. This would clearly be well beyond what was agreed within the Neighbourhood Development Plan (which runs to 2029). The Parish Council will keep villagers posted about this.

You have probably recently received your 2023-24 Council Tax Demand which includes an increase for the Kislingbury Parish Council element. While a percentage increase of 76.7% appears large it has to be put into context. For a Band D household, the Parish Council element increased from £62.08 for 2022-2023 to £109.69 for 2023-2024, so the increase is £47.61 - less than £1 a week. It is also worth saying that this applies to a household where there are at least two adults. In such a household it means that the increase per adult is less than 50p a week. It is also important to bear in mind that a very high proportion of the

Parish Council Precept is spent directly on improving the village. Unlike other tiers of local government, the Parish Council does not have (with the exception of the Parish Clerk) paid officers or buildings or equipment to maintain.

One of the biggest increases in planned expenditure results from anticipated increases in the cost of street lighting as a result in the huge increases in energy and replacement costs. The Parish Council is also taking on additional lighting associated with the Pembleton development. Other increased costs arise from the Community Pantry and putting money into a reserve fund for unexpected occurrences. The Parish Council has also agreed to take over the mowing for the Children's Play Area and maintenance of the Pocket Park (at the end of Camp Lane) and has, therefore, budgeted for this. We also wanted to be able to support other village organisations so the Grant Aid Budget has been increased.

The Community Pantry scheme is open to all Kislingbury residents in need and provides a weekly grocery box. All requests for help will be treated confidentially and comply with data protection regulations. If you wish to apply, please contact the Parish Clerk by phone (01604 858226) or email (parishclerk811@btinternet.com). I would like to thank those involved in ensuring the success of the Pantry but please do keep making your generous donations of food and money.

On the 6th January 2023, the driver of a white BMW hit and damaged the river bridge causing extensive damage. The Parish Council has been concerned about the approaches to the bridge for some time especially given increased traffic volumes and has made repeated approaches to WNC for action to introduce some signage to control traffic. We will be continuing to put pressure on WNC about this. The repair will require a road closure from 3rd-6th April (9.a.m. to 3.30 p.m.) so if you plan to travel at these times you will need to allow more time.

The Parish Council has now purchased two larger size bins to replace the two at the Playing Field entrance and on Mill Road opposite the Baptist Church. Hopefully, this will reduce the problem of overflowing dog bins. However, if you do find that a particular bin is full, please use the nearest emptier bin or take your dog's excrement home.

We are lucky to have the Upton Park (Phase 2) Country Park on our doorstep as the paths within the park provide a variety of walks. However, the Parish Council does have a variety of concerns in relation to management of the Park. There have been reports of horses being galloped on the paths and causing damage and there have been reports of a motor bike being ridden across the fields. Some dog owners do not observe the by-law that requires dogs to be kept on a lead. The Parish Council is also concerned by the contract-based maintenance regime which, for example, involves the flailing of trees and shrubs, which will reduce the diversity of species. For these reasons we are seeking to have a discussion with the responsible WNC Councillor.

At the February 2023 Parish Council meeting, local organisations attended at the Council's invitation to share ideas for marking the coronation. There will be a street party in the garden

Cont. on page 8

A Cut Above

Landscape and Tree Care

All tree work undertaken, all garden maintenance carried out including:

- Lawn care
- Turfing
- Patios
- Fencing

Please call for a free quote or professional local advice.

Mobile: 07939209791

Email: joebrandom@hotmail.co.uk

Kiln dried firewood also available for delivery.

36 Millers Close, Kissingbury



Goldmasters IT and digital media

- Computer / laptop repairs, upgrades, for hardware and software issues.
- Printer, networking, accessory and mobile phone set up.
- Website design and Social Media scheduling.
- Advice about Backup, safe disposal, and best practice.

No fix, no fee!

Just call Jack Gold (BA Hons) on 07879 567220 or 01604 831882

email on Contact@GoldmastersITDM.co.uk

www.GoldmastersITDM.co.uk

Parish Council cont. from page 6

of The Sun over the Coronation Weekend. In addition the Parish Council is in discussion with the head-teacher at the primary school about a suitable gift for the children. The Parish Council has also agreed to a request from the Kislingbury Community Group for a grant to help towards the Food and Drink Festival on 29th May 2023.

As I write, the finishing touches are being put to a website which has been designed by a company that specialises in websites for Parish Councils. Every Parish Council is required to have a website by both internal and external auditors but we are looking forward to having the website up and running as it will enable us to keep villagers informed about progress on a range of issues.

The Parish Council has now taken over the mowing of the Children's Play Area and the maintenance of the Pocket Park from the Kislingbury Playing Fields Association. We have asked for a meeting with KPFA to discuss a Memorandum of Understanding to clarify responsibility for the Pocket Park and to resolve issues of access for allotment holders and the mowing contractor. We are also interested to hear what plans KPFA has in relation to the money raised some years ago to improve the Children's Play Area.

The Parish Council welcomes Zoe Kemp as the new Tree Warden. If you have any concerns about trees in the village, please do get in touch with Zoe.

However, the Parish Council is still looking for two Parish Councillors. If you think you might be interested but want to know a little more before committing yourself, please get in touch with the Parish Clerk to find out what is involved. The role of Parish Councillor is flexible in terms of time required and can focus on particular areas of interest or expertise.

Dr Jonathan Hughes
Chairman, Kislingbury Parish Council

Congratulations to Nev and Gill Cooke who celebrated their 60th 'Diamond' Wedding Anniversary on 30th March 2023.

They married in 1963 on Gill's 20th birthday at St Luke's Church, with their reception afterwards at The Red Lion.





OPEN GARDENS

KISLINGBURY

SAT 17th & SUN 18th JUNE

11 AM TO 4 PM

£5 PER PERSON ENTRANCE FEE
ALL PROCEEDS TO ST LUKE'S CHURCH

PLANT STALL

TEA, COFFEE AND CAKE IN ST LUKE'S

SATURDAY 12 TO 5

SUNDAY 2 TO 4

PLEASE OPEN YOUR GARDEN
FOR A WORTHY CAUSE

CONTACT SUE KNIGHT 0784920322

DENI TOPLISS 07754471120

THE PARISH CHURCH OF ST LUKE.

The Induction of our new Rector, Revd. Nic Edwards, takes place at Bugbrooke Parish Church on Sunday 23rd April at 3pm. There will be no morning service at Kislingbury that day. Should anyone require a lift to Bugbrooke then please contact Judith on 830421.

HOLY WEEK

Details of our services for Holy Week are listed on the back page of this Newsletter.

CHURCH INTERNAL LIGHTING

Due to a wonderful donation, we have been able to replace our old light shades in the church and fit LED bulbs. This gives much improved lighting. Thank you to Sue Payler for thinking of us.

Drainage Work – Church Path

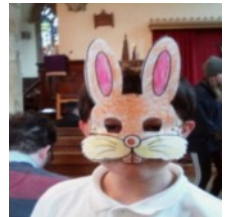
The second stage of this work has necessitated the obtaining of a Faculty from the Diocese of Peterborough for their permission to start. This involved the completion of a lengthy document and the display of a public notice for 28 days! Hence the delay in starting the work but we now hope it will be in the near future.

ENORMOUS THANKS to Sarah Payler and Dawn Lewis for organising the wonderful **PUDDING PARTY**, held in church on 24th MARCH in aid of the Church Fabric Fund. A large variety of scrumptious puddings/desserts were on offer, washed down with wine, together with a raffle and a Quiz.

A special thanks to all those who provided the puddings. We are most grateful.

EASTER MESSY CHURCH – we had a super Messy Church on Wednesday 22nd March when the activities centred around the events of Holy Week. We made palm leaves to illustrate Jesus' entry into Jerusalem, our own Easter cards, and "Life of Jesus Crosses".

We also had fun decorating Easter biscuits and making Easter Bunny Face Masks.



EGG DECORATING FOR CHILDREN **10.00AM GOOD FRIDAY 7TH APRIL** **IN CHURCH**

**Come and decorate your own hanging eggs to put on the Easter Tree.
Hot cross buns will be on offer + drinks.**

Cont. on page 12

John Masters

Established 1980

Painting and Decorating Services



Interior – Exterior – Period Work
Professional, Friendly & Reliable
Estimates and Advice Free
References Gladly Supplied
Quality Work Guaranteed

Tel: 01604 830632

Mobile: 07718 283765

E-mail: jmasters_decorating@hotmail.co.uk

40 Mill Lane, Kislingbury, Northampton NN7 4BD.

A.C. HARRISON

BUILDING AND LANDSCAPING

EXTENSIONS * BRICK & STONEMWORK

DRIVEWAYS & PATIOS * BLOCK PAVING

LANDSCAPING * GROUNDWORK

☎ Office: 01604 832181

f acharrisonbuilders

Mob: 07932 802287

✉ acharrisonbuilders@gmail.com

MESSY "VINTAGE" for the Young at Heart

Quizzes and puzzles with Afternoon Tea and a craft activity.

A warm welcome awaits on the last Wednesday of each month
in church 2.30pm – 4.30pm.

Our next "Vintage" are on WEDNESDAYS 26th APRIL and 31st MAY.

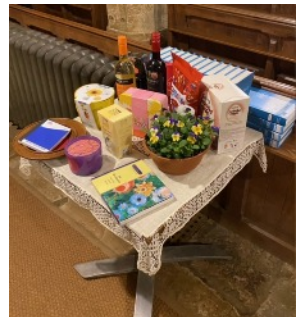
SUNDAY 14th MAY – ROGATION SUNDAY

Many, many years ago, it was the tradition to "Beat the Bounds" i.e. walk the village boundary when, at certain points, prayers would be said. We are hoping to "resurrect" this tradition this year within our four parishes and further details will be published nearer the time. After the walk, Teas will be served in the church.

Great night at St Luke's at the pudding party - lots of puddings, cheese, raffle, quiz and music - thanks to everyone who came.

A grand total of £800 raised for the church fabric fund.

Thanks to the Kislingbury Community Group for the wine donation, for everyone who made a lovely pudding, for all of our little helpers and for all others who helped.



Sarah and Dawn



Kislingbury Litter Pick

10 a.m. Saturday 22nd April

Meet on The Green

(corner of High Street and Bugbrooke Road)



Equipment (pickers, bags) provided
Bring your own if you can

**Bacon rolls and coffee will be
provided at the end of the pick**

Kislingbury Village Fayre Committee

We have decided it is time to reflect and regroup the Committee this year, there are only four of us on the Core Committee. Post Covid we organised two Sunday Fundays in August 2021 and 2022 rather than running a weekend of events in June as we used to do pre-Covid. We made donations in 2021 towards the Play Area and in 2022 to the Village Food Bank, the Christmas Reindeers, the Community Group (who in turn bought new equipment) and towards the new Church Sign. The group have always been committed to raising money for our village community.

We have not been able to run the Duck Race due to the state of the river which used to be a great event and enjoyed very much. It would be lovely to be able to do this again but it would need a lot of work to be done to the river. Alternatively a virtual Duck Race could be arranged if someone had the skills to do this?

The Kislingbury Community Group have been running several events which have been well attended. These include the Jubilee Celebrations last year and events at the village hall which have been very successful. A Food and Drink Festival is planned for 29th May at the playing fields which will, no doubt, be a great event.

We are, in conjunction with the church, hoping to put on a Fete in August, so watch this space for further details.

We are looking for new members with fresh ideas to join our group to help us move forward in our planning for a family village event in 2024.

If you are interested please get in touch with **Sarah on 07840731451**.

Kislingbury Village Fayre Committee, Sarah, Alison, Nick and David



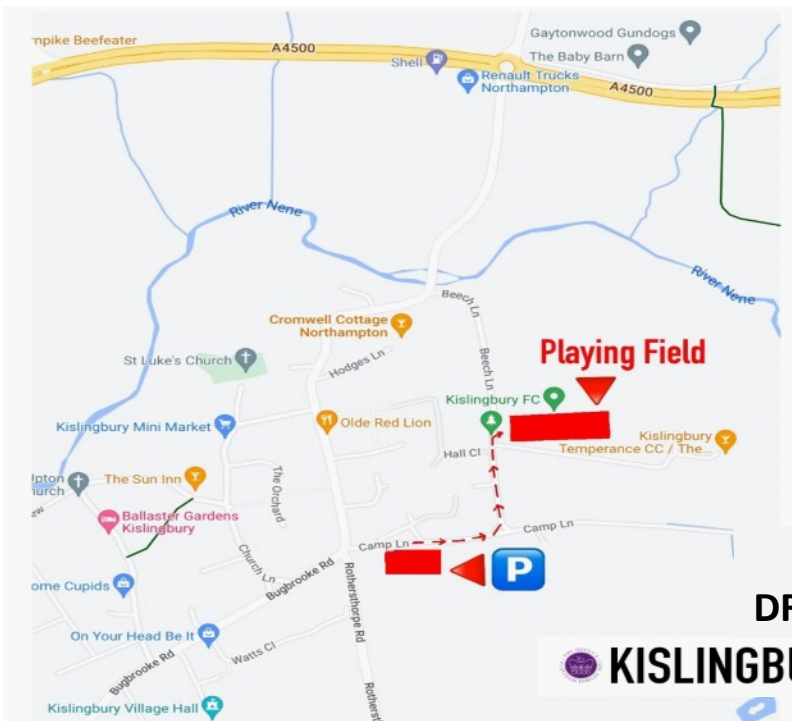
KISLINGBURY VILLAGE HALL

Desperately needs a new -

SECRETARY TO THE VILLAGE HALL COMMITTEE

Sadly, Doreen Hartwell is no longer able to carry out this work to the standard she would require and sadly wishes to relinquish her position as our Secretary. This comes after being in this position for more years than we care to remember!

PLEASE CONTACT DOREEN IF YOU ARE WILLING TO HELP IN ANY WAY AND SHE CAN GIVE YOU MORE INFORMATION. CONTACT HER ON 01604 830343.



**FOOD AND
DRINK FESTIVAL**

KISLINGBURY Parking

LIGHT UP ST LUKE'S

The draw for January, February and March has taken place.

Many thanks to Margaret Challans who drew Jackie Jackson's number for January, Mike Ealey who drew Robin Corlet's number for February and Diane Dove who drew Dennis Tidmarsh's number for March. Congratulations to Jackie, Robin and Dennis and many thanks to Margaret, Mike and Diane.



If anyone would like a number for Light up St Lukes Lottery please call me, I still have a few numbers available.

The cost of each number is £5 per year and you could win £25 each month Jan to May and July to November, and £50 for June and December, a great bonus and a lovely way of helping to keep our church lit, which we all love to see.

Take care everyone and stay safe.

Deni Topliss, Mob 07754471120



Kislingbury Food & Drink Festival

Bank Holiday Monday, May 29th
Kislingbury Playing Fields 10am

ADMISSION FREE

- ❖ Over 30 Food and Drink Suppliers
- ❖ Hot Food and Snacks, Plus Bar
- ❖ Free Entertainment for the kids (Bouncy castle, etc..)
- ❖ Come and Ride the RODEO Bull
- ❖ Goody Bag for first 100 Children under 10.

**Bring the whole family for a Fun Day out
Something for everyone of ALL ages**

Villager Interview - Dennis Tidmarsh

Dennis has lived in the village for 50 years and will be familiar to some of you because of his very proactive time as Village Flood Warden and as a friendly face at community events. However, how many of you know about his unusual sporting activity as a young man and his promotion of dancing in the village in the 1970s? Read on for more surprises and to learn about his interesting life and career.

Where did you grow up?

'I was born in Balham, London, in 1935. My parents had a café there. When I was still a baby we moved to Eastcote in Middlesex, and then to Kings Langley, where apparently, as a toddler, I used to wander down the road to look at trains. My father was a heating and ventilation engineer, and we moved about a lot with his job, sometimes living in rooms in a house with other people, as many people did in those days. In 1940 we moved to Staffordshire, and I started school there. While living in Meir, Staffordshire, I used to go and see Stoke City play football and watched Stanley Mathews and Neil Franklin play. During the war, I can remember American service men bringing bananas into school and this was the first time I had ever seen a banana. I also remember seeing German planes flying overhead, firing guns, and having to get out of sight.

In 1947 we moved back to West Drayton, Middlesex to live with my paternal grandmother. It was there that I started to go old time dancing at the WI hall and where I first met my future wife, Delphine; I was 12. She was a medal winning dancer. I did not start going out with Delphine until several years later though. I also started to play bicycle polo and went on to play the sport for Uxbridge for several years, even after moving to Iver Heath in 1951. Bicycle polo is played on a fixed wheel bike with no brakes. One year we reached the final of a tournament played at Cowdrey Park, where the rich and famous play horse polo. After our game the horse polo guys asked if they could have a go on our bikes; they did not allow us to have a go on their ponies! We did not win our match against Solihull.



In 1952 I started an apprenticeship as a service engineer on large construction equipment, with George Wimpey's company based in Southall. I used to cycle 8 miles there from Iver Heath and 8 miles home again. When I started going out with Delphine in 1955, I had to cycle an extra 5 miles to see her after work, so 26 miles a day in total. Sometimes, as it was uphill on the way home from Southall, I used to hang on to the backs of lorries to make the journey easier. You would not be able to do that these days. In 1956 I finished my apprenticeship and started 2 years national service in the RAF. I had wanted to go into airfield construction but would have had to sign up to the RAF for 11 years, but did not want to, so I ended up being an administrative clerk for new boy recruits into the RAF. Some of the time I was

billeted reasonably near home, so could hitchhike back to see family and Delphine. I also got to travel to different RAF camps across the country, which I enjoyed. I had not wanted to go into the RAF, but it ended up being one of the best things I ever did. I went in as a boy and came out a man. I became very fit, learnt how to fend for myself, to respect other people and learnt self-discipline. I enjoyed the camaraderie and experience of sharing life with my fellow men, even if it was often spent in a small wooden hut heated by two fires in the middle of the floor.'

How did you come to live in Kislingbury?

'In 1958 I went back to work for Wimpey's but then changed jobs to work for Caterpillar's in 1959. I married Delphine in 1959 and for a couple of years we lived in rooms in Yiewsley, Middlesex, with a lovely Miss Cox as our landlady. We then moved to Twyford in 1961 where our 2 children were born. The family moved to live in Abington Vale in 1969, when I moved to work for Blackwood Hodge in Northampton. However, once extensive building started to the East of Northampton, we decided to look for a quieter home in a village, liked Kislingbury and moved to live in The Orchard in 1972. In August 2004 we moved to The Bungalow on the Green where I still live.

Blackwood Hodge were the largest earth moving equipment company in the world at that time, and as Blackwood Hodge's Field Service Manager for the UK, I travelled extensively in the UK and abroad, including Canada, America, Romania, Iraq and Sudan. They were a great company to work for, but, sadly they folded in 1990 and I was made redundant. I was head hunted by a company in Nottingham where I stayed for 2 years before being made redundant again. I then worked for O and K in Watford village. They were manufacturers of large excavators, the largest being 400 tons! I was in their service department, where I stayed until I retired in 2000. Again, I travelled extensively in Germany and Indonesia, and greatly enjoyed it.

During my time working for the construction equipment dealers, I joined the East Midlands branch of the Lighthouse Club, a charity organisation for the Construction Industry which raises money to support construction workers' families who have fallen on hard times due to illness or fatalities. I served on the local branch committee for some 40 years as a Welfare Officer. This entailed me visiting families and establishing if they were eligible for support. It could be very emotional at times and some of the conditions that I encountered were not fit for a pig to live in!'

What was Kislingbury like when you moved here?

'The village was a good place for our children to grow up and they attended the local school. The village was friendly and had several shops then. We had lovely neighbours, and some became very close friends. Although the village was friendly, at first Delphine and I were both working so did not get involved in the village much, but I soon joined the village Conservative Branch and the PTA committee at the village school, and so made more friends. While on the PTA, I organised dinner dances at the Cromwell which had a dance

Cont. on page 20

Cave & Sons

Stockbroking | Investment Management | Financial Advice

Established in 1906, Cave & Sons is an independent company based in Northampton offering a range of investment management, stockbroking and financial planning services. As one of the oldest surviving independent stockbrokers in the UK, Cave & Sons has a multi-generational reputation and is recognised for providing an on-going client service of the highest calibre.

For more information, please contact Financial Planner and Kislingbury resident, Scott Newbould on 01604 621421 or email snewbould@caves.co.uk or visit www.caves.co.uk.

Cave & Sons Ltd is authorised and regulated by the Financial Conduct Authority (FCA), Financial Services Register number 143715.



DAVID COSBY
ESTATE AGENTS

- INDEPENDENT & PROFESSIONAL
- LEGAL AND SURVEYING EXPERTISE
- ABSOLUTELY NO HIDDEN COSTS

1%
Inc. VAT

t: 01604 979628

e: enquiries@davidcosby.co.uk

Farthingstone, Northampton, NN12



RICS[®]

rightmove

Dennis Tidmarsh cont. From page 18

floor then! Delphine was on the Parish Council and was Chairperson of the Village Hall Committee for many years. I was the village Flood Warden for 30 years and was heavily involved when the flood defences were built and, more recently, worked closely with the Local Authority and Environment Agency to ensure all the drains in the village were cleaned and improved to prevent further flooding. I am still an active member of the Kislingbury Over 50s (KOFs) Club and am on the committee of the Kislingbury Community Group (KCG) and get involved in running the KCG events to raise funds to support various projects in the village. For several years I have also organised a St George's Day dinner at the Sun Inn.

Back in the 80s there was a walking group, run by Robin Corlett, called the Kislingbury Pathfinders, which used to meet regularly and walk 7 or 8 miles. Over time, some of us were finding the distance too much so I, and a couple of others, started the Kislingbury Amblers who walk about 4/5 miles at a slower pace. We never got lost! The group is still walking today.'

What do you think about the village now?

'It is still a lovely village to live in. We are very lucky to have a well-run shop, a post office and two pubs to chose from. Other villages have seen their shops and pubs close down. There are good social groups which provide support and activities. The Church still provides a social network for some in the village, and I try and support their social events. KOFs is a great group for older people, is very well organised and has many activities. Some of the groups for youngsters are not run anymore, like the football club, and youth club, which is a shame.

I have no regrets coming to Kislingbury in 1972 and would have to think seriously before I would consider leaving it as I have made many lasting friends here. I feel very strongly that we must fight to stop the expansion of the village otherwise we will become like Duston village which has entirely lost its identity and become part of Northampton Town. I would certainly like to see more of the newcomers joining in various village activities and groups to maintain the good social aspect of the village.

So, please come along and support the '**Food and Drink**' event that is being held on the playing fields on **Monday 29th May from 10am until 6pm. Entrance is free and there will be some 30 stalls, a Bouncy Castle, Helter Skelter and Rodeo Bull.**

SPREAD THE NEWS AND KEEP THE DATE.'

Interviewed by Gill Blake

Thank you to all friends and neighbours who have shown such kindness and support during Bryan's illness. I was overwhelmed by the many cards and flowers that I received.

My thanks to all who attended Bryan's funeral and for donations to the Alzheimer's Society.


Dee Taylor

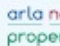
100% NO SALE, NO FEE

- No Upfront Marketing Fee
- No Withdrawal Fee
- Local and Experienced
- Free Energy Performance Certificate
- Free Premium Listing
- Free 360° Virtual Tour



Check out our reviews on Facebook

 Chris Gibson
- Horts Property Consultant

 arla naea
propertymark



PERSONAL • PROFESSIONAL • PROACTIVE

PRIDE & JOY AUTOS

Body and Paint Refinishing Specialists

Car / Van / Bike

Dents / Scuffs / Scratches / Alloy Wheels

Smart Repair / Crash Repair / Custom Re-Spray / Restoration

Aluminium / Steel / Plastic / Glass Fibre / Carbon Fibre

PLEASE CALL OR EMAIL FOR A FREE QUOTE

07483 893339

prideandjoyautos@gmail.com

Watling Street, Paulerspury, Towcester, NN12 6LQ

***FREE COLLECTION /
DELIVERY IN KISLINGBURY
15 Years Experience**



Kislingbury Community Group

We continue to offer support and funding to projects and individuals who need help within the village. If you would like to apply for a grant, please contact Pat Kidson on 07932 566054.

A big thank you to everyone who came along to our "Night at the Musicals " event in the Village Hall and a sell out ensured another highly successful night. From the proceeds we sent a £300 donation to the Disasters Emergency Committee who are working tirelessly to help victims of the Turkey/Syria earthquake tragedy.

Our next event will be a first for Kislingbury, to be held on the Playing Fields on **Bank Holiday Monday, May 29th.**

We are hosting " **The Kislingbury Food and Drink Festival** " showcasing many of the food and drink suppliers and producers from around Northamptonshire, with hot food, bar and entertainment for the kids to enable a great day out for the family.

Many of you will remember the great Jubilee event we held last year, so make sure you have this date in your diary.

Looking further ahead our next event in the Village Hall is on **Saturday October 7th**

with a sensational Tina Turner tribute evening " **Typically Tina** ".

Sure to be another sell out so look out for ticket details coming soon.

ARE YOU INTERESTED IN LEARNING TO RING THE CHURCH BELLS?

Practices take place on Monday evenings and the bells are rung for services, including weddings etc. We are always welcome for anyone to join us.

Contact **Sandra on 01604 845299** or just turn up on a Monday evening 7.30pm at the church.

The only stipulation is that you must be over 12 years of age but there is no upper age limit. Very good for keeping fit!



Cakes for all Occasions

*Wedding Cakes &
Celebration Cakes made to order
Small Buffets &
Afternoon Teas catered for*



Sarah Mayo

HND MRIPHH

Hollybank, 5 The Orchard, Kislingbury
Northamptonshire NN7 4BG

01604 830679

Mobile number: 07711 927742

Email: enquiries@sarah-cakesforalloccasions.co.uk
www.sarah-cakesforalloccasions.co.uk

ACUPUNCTURE



**in
Kislingbury**

Julie Neal, MBACc

**Acupuncture treats a wide
range of problems including
pain, insomnia, stress
and anxiety**

**I have a particular interest
in fertility and IVF**

**Call to see if acupuncture
could help you.**

Home visits also available

Tel: 831199 or 07957 324586

E-mail: julie@nice-needles.co.uk

Tom's Blinds

Tom Brown

**Fitter of blinds with over
10 years of experience**

Located in Nether Heyford

Contact us for a free, no obligation quote

Phone: 07740743628

Email: toms.blinds@outlook.com

www.tomsblinds.co.uk



Find us on Facebook



Kislingbury Bowls Club.

Your Village Bowling Club.

The Playing Fields, Beech Lane. Kislingbury. NN7 4AL

Dates for your Diaries.

The 2023 Season Starts At The End Of April.

New Members Welcome.

***50% Subscription Discount for New Players
To The Sport for the first year.***

**This year we will be holding further
“OPEN DAYS”**

Sat. 22nd April & Sun. 23rd April. 2.00pm to 6.00pm.

Sun. 30th April. 10.30am. to 2.00pm

Sun. 28th May. 10.30am. to 2.00pm

Please contact our secretary Chris Abbott

01604 831562

For further details.

Bingo Night.

Cash Prizes and Raffle.

Wednesday April 5th 2023. 7.00pm.

Open to all.

Afternoon Tea.

Sunday 11th June 2023.

Two sittings. 2.00pm & 3.30pm.

£9.00 per head.

Kislingbury Amblers



We are a group of like minded individuals who meet usually on the first and third Wednesday of each month to have a walk of about 5 miles in the local area and then a pub lunch.

If you would like more information or to join the group
Please call John on 07977938311 - ALL ARE WELCOME

1ST WALK FEBRUARY - We started from the Embankment in Wellingborough amongst the vast flock of swans who thought we had come to feed them. We turned east on the Nene Way following the river and walking to the first bridge which we crossed into the Industrial Estate. Following the road left we came to the entrance to Chester House Estate and took the track to the house and farm complex noting the various archaeological digs and information boards on route.

At the farm we found several shopping outlets and an excellent café where we had coffee and cake before retracing our steps to the farm entrance. We followed the wall around to the front of the house, crossed a small bridge over a stream and then the bridge over the river. Turning left we followed the Nene Way back to the Embankment crossing several small streams on the way.

11 of the group drove to The Dog and Duck Pub for lunch, not an experience to be repeated as one of the group commented, it was the first time we had eaten there and it would be the last.

2ND WALK FEBRUARY - A group of 11 walkers met at Upton Country Park Car Park for a 5.5 mile walk around Hunsbury. Leaving the car park we crossed the park to the canal, we then followed the tow path to Banbury Lane bridge. Leaving the car park we walked through the Lock Gate Road development passing under the A43 and then entered West Hunsbury heading to the Drivers Café. Leaving the café we went up hill viewing the old Iron Stone Heritage Railway. Zigzagging up the hill we came to the Iron Age Stone Fort and observed the earth works.

After a short break we headed back down the hill

1ST WALK MARCH - Despite a last minute emergency, when our beloved leader noticed that his rear tyre was flat at the top, we did manage to commence our walk, four minutes early.

Leaving the village of Paulerspury via the churchyard of the Church of St James the Great, we headed across the fields towards the hamlet of Pury End. On the way we walked around the outside of a field, although the footpath actually went straight

across the middle. When tackled on this our beloved leader stated that he was busy on his phone sorting his car out!!

Joining "The Grafton Way" we left the hamlet, on our way noticing a field full of young lambs with their proud mums. Walking past Sholebroke Farm we headed back towards Paulerspury. This walk consisted of bridle ways, field paths, woods and hard surfaces. Reaching our cars we retired to the Navigation in Stoke Bruerne for a spot of lunch. Then we abandoned our beloved leader leaving him to sort his car out.

Second Walk of March: Upton A local walk was thought advisable, so once again our amblers stepped out into windy, 4/5 degree Celsius conditions. The recent rain and snow were a distant memory and we were fortunate with a perfect walking day which took us around the very pleasant Nene parkland to Upton.

The intended circular route to Upton is well sign posted. We crossed the river bridge and followed the signage to the prepared, flat tarmac of the first leg of our walk. The lambing season was in evidence with many young lambs on the meadow. After walking approximately 500 metres we took a right turn through a gate to follow the river. The recent rain and snow had left a swollen river and flooded meadows. Several fallen trees and some debris were noticed in the river.

The walk was not as muddy as expected. We eventually rejoined the Nene pathway near the farm and re-crossed the river. We took our break at the well known 'Look Out' area. A point of interest was a house under construction in the wooded area near to Upton mill. Our return was via Camp Lane and the river paths. Unfortunately, we did not have sufficient time to take in the activity trail final leg near to the warehouses and the old lake.

The walk was just over 4.5 miles taking around two hours. Lunch was taken at 'The Turnpike'. Our group included 14 walkers with 13 staying for lunch.

Road works

Kislingbury Bridge will be closed for repairs from **3rd - 6th April (9am to 3.30pm)**.

From **April 3rd - September 1st** a new sewer will be installed along the A4500 with rolling lane closures from the end of South View to approx. The Hawthorns, Upton.



===== ANY VEHICLE =====
01604 830552

DIAGNOSTICS

Hours 08:00 - 17:00, Mon - Fri

SERVICING & REPAIRS

UNITS 1 & 6

MOTs (can be carried out while you
wait, by appointment only)

WEST BAULK PROPERTIES

BUGBROOKE ROAD

KISLINGBURY, NN7 4AY

HELP@KIZZLEAUTOS.COM

Motorbike MOTs - Mon-Fri - 08:00 - 17:00 by appointment only



Choose Quinton House...

At Quinton House School we deliver an innovative learning experience both within and outside of the classroom that is tailored to suit the needs of your individual child. Quinton offers a 21st century curriculum based on traditional values.

Book a visit today and discover our exceptional school where dreams are realised. Call Jo Sainsbury, Admissions Manager on 01604 684828.



www.quintonhouseschool.co.uk  

A co-educational independent day school for girls and boys aged 3-18 years.

TALES FROM KISLINGBURY ARCHIVES

The following article appeared in one of the first editions of the Kislingbury News in 1955, then called Kislingbury Village Magazine.

The article was called 'The Changing Scene' and was written by 'Perfectionist'.

It is doubtful if a third of the adult population in this village have any idea of what the Mill and its waterfront was like 30 – 35 years ago.

Then it was really a mill with its two gigantic millstones grinding the corn and getting their power from the swiftly flowing waters beneath, and which would be held back in the dam to suit the grinding periods. Then also, the front was a thing of beauty with its expanse of water, half covered in summer with yellow lilies, and shaded by the overhanging trees.

Where the water rushed through the arch, shoals of dace, roach, gudgeons and minnows could be seen whilst on hot days in the quieter parts, in the shade of the trees, pike rested on the waters. Truly a pleasant scene on a summer day, and also one that provided excellent sport for the fishermen. How different today! Through indifference and neglect, and finally the dumping of soil in 1946 from the Millers Close houses, it is now a wilderness and a 'return to the jungle'. Even the trees are now alas few in number and stunted in shape.

Cole Lane is not, and never will be again, the glorious picture at chestnut blossom time that generations knew and loved.

Our village greens, owing to the sewerage excavations have also suffered, but their restoration should not be long delayed.

Against all this, can be set the renovation of numerous old stone houses, and the creation of fine gardens; Cromwell Cottage, Bridge Cottage and Warwick House come to mind, and the first named providing a beautiful entrance from the bridge.

Starmers Lane also has vastly improved during these past few years with only one ugly corner remaining for someone to build upon and beautify with a garden.

Other old stone houses have been restored and will be pleasing to the eye for generations.

There is much to be done before all the ugly and untidy spots in this fair village are made presentable if not beautiful.

If you have any photos, documents or recollections that may be of interest, please contact us: Anne Upton 833519 Felicity Dunkley 830514

M. PAYNE & SONS



EST. 2005



LOCAL VILLAGE MAN

BUGBROOKE AND KISLINGBURY

MEL PAYNE
TEL: 01604 833649
MOBILE: 07761742997
E-MAIL:
MELPAYNE@BTINTERNET.COM

GARDEN CARE

FULLY INSURED

LAWNS CUT



TREE WORK



FENCING/DECKING



GROUND WORK/PATIOS

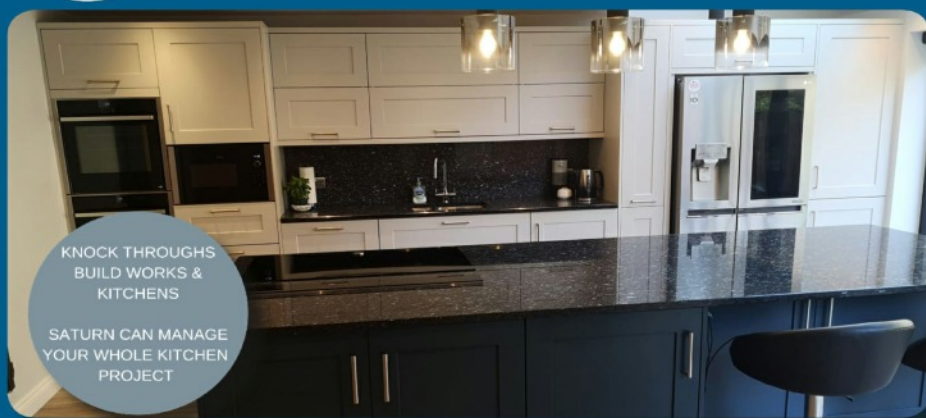


GENERAL TIDY UP



SATURN KITCHENS

FREE KITCHEN DESIGN



KNOCK THROUGHS
BUILD WORKS &
KITCHENS

SATURN CAN MANAGE
YOUR WHOLE KITCHEN
PROJECT

EXTENSIONS | KNOCK THROUGHS | GARAGE CONVERSIONS | BI FOLD DOORS



Saturn Interiors | 15 Ryehill Court, Lodge Farm Ind Estate, NN5 7EU
T: 01604 582835 WWW.SATURNINTERIORS.CO.UK



Kislingbury over Fifties



APRIL / MAY

KOFS CURRENT PROGRAMME OF EVENTS

- Apr 6th** **KOFS EASTER EGG RAFFLE**
- Apr 13th** **KOFS GRAND NATIONAL FLUTTER**
- Apr 20th** Kislingbury Primary School visit to meet the **KOFS** and Art group
- Apr 29th** **KOFS** visit to Duston Players afternoon matinee of Arsenic and Old Lace
- May 18th** **KOFS** picnic at Farthingstone
- Jun 19th** **KOFS** Afternoon tea
- July** **KOFS** Canal boat cruise down the Nene
- Sep 28th** **KOFS** Macmillan Coffee morning
- Dec 2nd** **KOFS** visit to Duston Players afternoon matinee the pantomime CINDERELLA
- Dec 7th** **KOFS** Christmas Party

The KOFS meet at the Village Hall **every Thursday at 10.30 am** for coffee and a chat.

We welcome you to come along and join us. please contact us to arrange for a member to accompany you on your first visit to the KOFS.

Contact Mike Jackson Secretary for more information on
01604831747 or 5fivejays@gmail.com

KISLINGBURY ART GROUP

APRIL / MAY



We have vacancies
at this point in time
if you would like
to join us

The group is organised, to provide a venue for artists of all abilities from beginners to fully experienced; to meet together, to paint, and share the company of others with similar interests, in a non formalised group.

**We meet on Thursday afternoons at the Village Hall
between 2 pm and 4pm**

**For further info. contact:
Judith 830421 Mike 831747**

Bugbrooke Medical Practice

The surgery will be closed for staff training from 12.15 on the following dates:

Wednesday, 19th April
Wednesday, 17th May

25 Years service supporting your Community

In 1998, after some gentle persuasion from the late Harry Frost, former village resident Jim Wood agreed to become the Clerk to administer your Community Charity, Kislingbury Town and Charity Estates.

After 25 years loyal service, Jim has now decided to retire. To mark this momentous event, Chairman Martin Upton presented a gift to Jim in gratitude for all the work he has done, in supporting our elderly village residents and also in administering grants towards new sports and recreational facilities, as made by the charity over the years.

One of the current Trustees and village resident, Roger Wilson, has agreed to take on the Clerkship in Jim's place – he knows that he has big shoes to fill!



Chairman Martin Upton (left) presents Jim Wood with his retirement gift, to applause from the Trustees

View Kislingbury News On-Line

Kislingbury News, including back issues, can be viewed on-line.

Simply go to **www.kislingburypc.org.uk**
and click on the “News” tab.

or go to **www.kislingburyonline.co.uk**
and click on the “Kislingbury News” tab.

DO YOU HAVE AN ELDERLY RELATIVE FACING HARDSHIP?

Your community charity, Kislingbury Town and Charity Estates, has provided financial or other assistance to elderly village residents in need for over 600 years.

We know that some Senior Citizens in the village are currently facing hardship, but it is often not in their nature to ask for help. If you have an elderly relative, resident in the village, who is suffering hardship - particularly as a result of ill health - we might be able to help.

How can you help?

You tell us about the hardship, in strictest confidence, and we will consider how we can help your relative.

Recent examples include a grant towards the Village Food Bank scheme; contribution towards a stair lift and tracking device for an elderly resident; and support to cover a resident's exceptional medical expenses. Equally, we might make a one-off financial grant to help address a hardship.

What would I need to do?

Please contact our Clerk **Roger Wilson** on **(01604) 831786** for a strictly confidential discussion – the Trustees can meet at short notice to consider requests.

Equally, if you are looking for funding towards facilities in the village which will promote community participation in sports or recreation, please give Roger a call.

THE PARISH CHURCH OF ST LUKE

Services for April and May

HOLY WEEK

Sunday 2nd April	11.00am	Family Service for Palm Sunday
Monday 3rd April	7.30pm	Compline Evening Service at 3 Church Lane
Thursday 6th April	7.00pm	Evening Worship at Rothersthorpe for Maundy Thursday
GOOD FRIDAY - 7th April	2.00pm	Good Friday Meditation
EASTER SUNDAY	11.00am	Easter Family Communion
Sunday 16th April	11.00am	Morning Worship
Sunday 23rd April		No morning service at Kislingbury INDUCTION SERVICE FOR THE REVD. NIC EDWARDS 3.00pm BUGBROOKE PARISH CHURCH
Sunday 30th April	10.30am	BENEFICE SERVICE AT KISLINGBURY
Sunday 7th May	11.00am	Morning Worship
Sunday 14th May	10.30am	BENEFICE SERVICE AT ROTHERSTHORPE IN THE AFTERNOON, BENEFICE "BEATING THE BOUNDS" FOLLOWED BY TEA AT ST LUKE'S
Sunday 21st March	11.00am	Morning Worship
Sunday 28th May	11.00am	Holy Communion

Kislingbury & Upton Community Church (KUCC)

Mill Lane, Kislingbury, NN7 4BD

Kislingbury & Upton Community Church (KUCC) aims to be a Church for all ages and stages.

Tuesday Prayer and Praise Service in Kislingbury, between 10am and 11am
www.KUCC.co.uk Email: info@kucc.co.uk T: 07432 881576

St Patrick's Catholic Church

28 Peveril Road, Duston

Father Benny Joseph MSFS, Email: stpatrickduston@gmail.com

Mass Times	Sunday	9.30am	Tuesday	9.30am
	Friday	9.30am	Holy days	9.30am

For more information visit: www.stpatrickduston.org.uk

Real Cask Ales

Guinness Accredited



Beer Garden



Opening Hours:

Monday to Friday: 5pm – 11pm

Saturday: Midday – 11pm

Sunday: 11am – 10.30pm

Food Served:

Tuesday to Saturday:

6pm – 9pm

Sunday: Midday – 3pm

Food offer

Every Tuesday - Pie and a pint £12

Every Wednesday - Curry and a pint £12

Pizzas and main menu served Thursday - Saturday

Sunday lunch served from midday - 3pm

See www.thesuninnkislisbury.co.uk for current menus

Coming Up

April

8th April - Live Country singer **Tom McManus** performing at 7.30pm and a hog roast van 6-9pm.

9th April - We have the '**No Vocals**' band performing from 7pm.

10th April - Open midday - 11pm

16th April - Psychic Evening from 7.30pm, with **Penny and Pete**.

18th April - Open Mic night starting from 8.30pm.

30th April - Monthly Pub Quiz, 7pm

March

1st May - Bank Holiday open 12 midday - 11pm.

5th May - Live music from **Hollie Marie** and Mini Beer Festival 7.30pm start.

6th May - The Sun Inn BBQ (on the house) and mini beer festival for **King Charles III Coronation**.

8th May - Bank Holiday open 12 midday - 11pm.

16th May- Open Mic night starting from 7.30pm.

30th May - Monthly Pub Quiz 7pm start.

Announcements

New Offer - 2-for-1 Pizzas every Thursday, 6pm - 9pm, starting 6th April.



@thesuninnkislisbury

Tel No: 01604 833571